



## TECHNICAL SPECIFICATIONS

BETA ENERJİ VE TEKNOLOJİ ANONİM ŞİRKETİ  
Acıdereoslu Mah. Çanakkale Cd. No: 11  
Sarıçam / ADANA Tel: 444 71 07  
Faks: 0 322 394 42 53 - Mersis No: 07500075000001  
Yücegir V.D. 658 115 6259

BSA.23.38

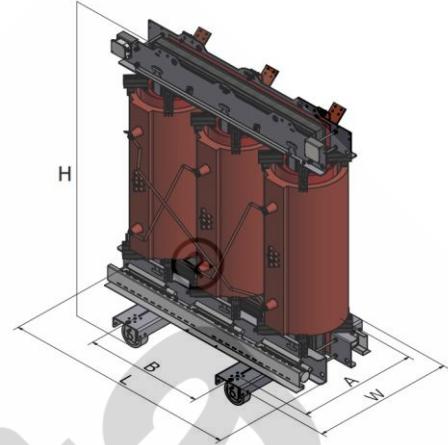
CAST RESIN TRANSFORMER

Elc. Eng. Halime BOZ

31.05.2023

### ELECTRICAL DATA

Standards:	IEC 60076-11	
Service:	Distribution	
Rated Power	1000	kVA
Primary Side:		
Rated Voltage	10	kV
Voltage Tappings	$\pm 2 \times 2.5\%$	
Rated Current	57,74	A
Connection	Delta	
Secondary Side:		
Rated Voltage	0,4	kV
Rated Current	1443,38	A
Connection	Star + N	
No Load Loss (Ecodesign Tier-1)	1550	W
Load Loss at 120°C (Ecodesign Tier-1)	9000	W
Short Circuit Impedance at 120°C ( $\pm$ IEC tolerances)	6	%
Sound Power Level	65	dB
Partially Discharge Level	$\leq 10$	pC
Number of Phase	3	
Frequency	50	Hz
Vector Group	Dyn11	
Insulating Class (Primary/Secondary)	F/F	
Maximum Temperature Rise of Windings	100	K
Cooling Method	AN-AF	
Conductor Material (Primary/Secondary)	AL/AL	
Insulation Level of Primary Side	12/28/75	kV
Insulation Level of Secondary Side	1,1/3/-	kV
Classes:		
Climatic	C2	
Environmental	E2	
Fire	F1	
Altitude	1000	m
Location	Indoor	
Enclosure		
Protection Class	IP00	
Material	-	
Thickness of Steel Sheet	-	
Thickness of Coating	-	
Colour	-	
Enclosure Weight	-	



### DIMENSIONS

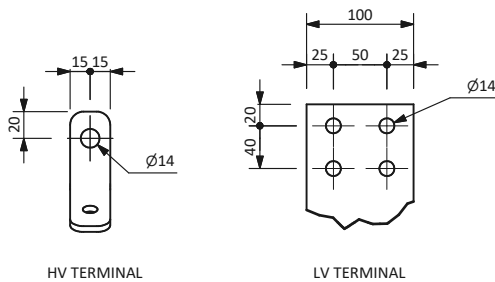
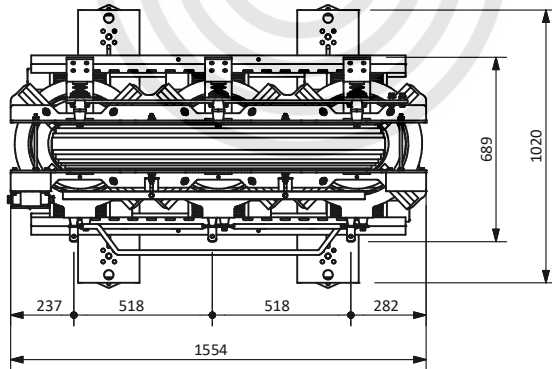
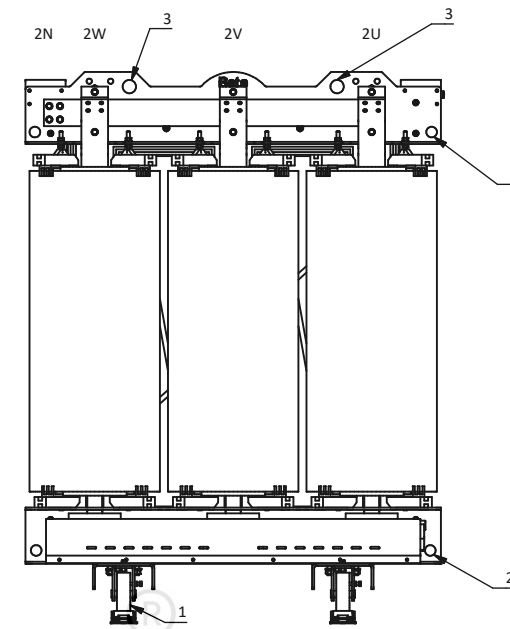
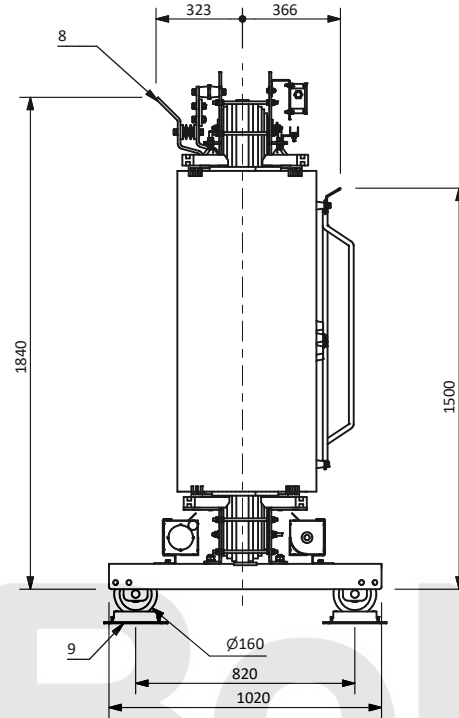
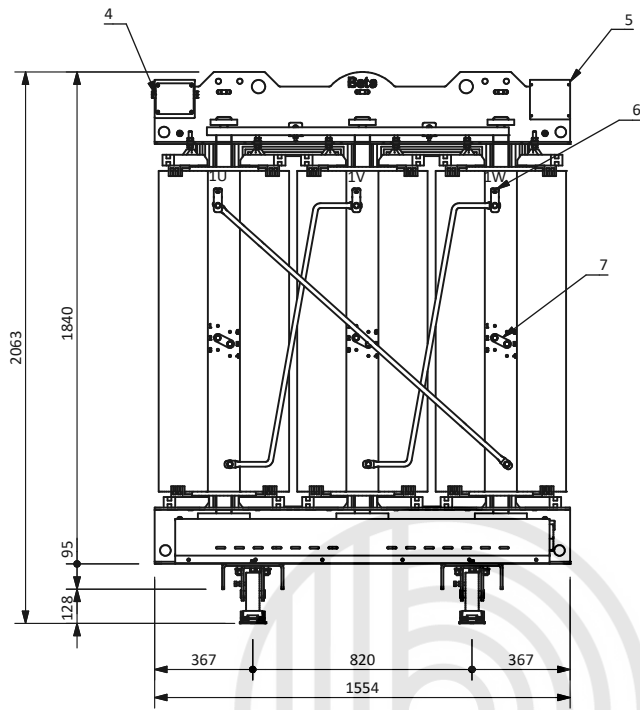
Length	L	1554	mm
Width	W	1020	mm
Height	H	2063	mm
Wheels Center	AxB	820x820	mm
Wheels Diameter		160	mm
Transformer Weight		2835	kg
Total Weight		2835	kg

\*Dimensions and weight are  $\pm 10\%$  toleranced.

### INCLUDED ACCESSORIES

- PT100 temperature sensors
- PT100 distribution box IP55
- Temperature Controller Relay
- Wheels (Adjustable in two ways)
- Rating Plate
- Earthing terminal
- Eyebolts for horizontal moving
- Lifting Lugs
- Use and Maintenance Manual
- Routine Test Report
- Cooling Fan


**Technical Remarks:** Tolerance and tests according to IEC 60076 (if not otherwise indicated)  
Dimensions and weight are approximate and will be confirmed after PO  
Warranty referred at nominal power rating and nominal voltage ratio (the highest in case of double primary voltages)  
Sound pressure level referred at 1000 mm with AN and +3 dB tolerance



- 1- WHEEL
- 2- PULLING LUG D=30
- 3- LIFTING LUG D=50
- 4- PT100 TERMINAL BOX
- 5- NAMEPLATE
- 6- HV TERMINAL
- 7- HV TAP LINK
- 8- LV TERMINAL
- 9- ANTIVIBRATION PAD

**TOTAL MASS = 2835 kg.**

**TRANSFORMATOR ELEKTROMEKANİK SAN. TİC. A.Ş.**  
 Hacı Sabancı Org. San. Böl. Çanakkale-Cad.  
 No: 11 Sarıyer / İZMİR - TIR 44 71 01  
 Fax: 0322 394 0 55 / Mersis No: 0859115623900001  
 Yabancı V.D. 859 115 6239

00	23.05.2023	A.O.GUZ	G.AKYILDIZ	First Issue
Revision	Date	Prepared	Checked	Description
Project :				Title
1000kVA 10-0.4kV Dyn11 CRT				Dimensional Drawing
				Drawing No
All dimensions are in mm.				
Dimensions are Toleranced ±%10				
Scale: A3				
			Page	Total Page
			1	1